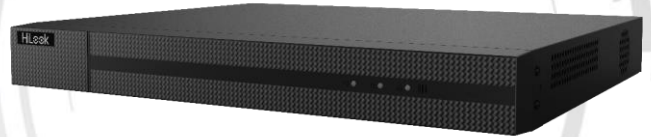


DVR-216Q-M2 TURBO HD DVR

Key Features

- Deep learning-based motion detection 2.0 for all analog channels
- H.265 Pro+/H.265 Pro/H.265 video compression
- HDTVI/AHD/CVI/CVBS/IP video input
- Audio via coaxial cable
- Up to 24-ch IP camera inputs
- Up to 10 TB capacity per HDD



Compression and Recording

- H.265 Pro+ can be enabled to improve encoding efficiency and reduce data storage costs
- Full channel recording at up to 4 MP lite resolution

Storage and Playback

- 2 SATA interfaces
- Smart search for efficient playback

Smart Function

- Support multiple VCA (Video Content Analytics) events for both analog and smart IP cameras

Network & Ethernet Access

- HiLookVision & DDNS (Dynamic Domain Name System) for easy network management
- Max. 96 Mbps incoming bandwidth and output bandwidth limit configurable

Specification

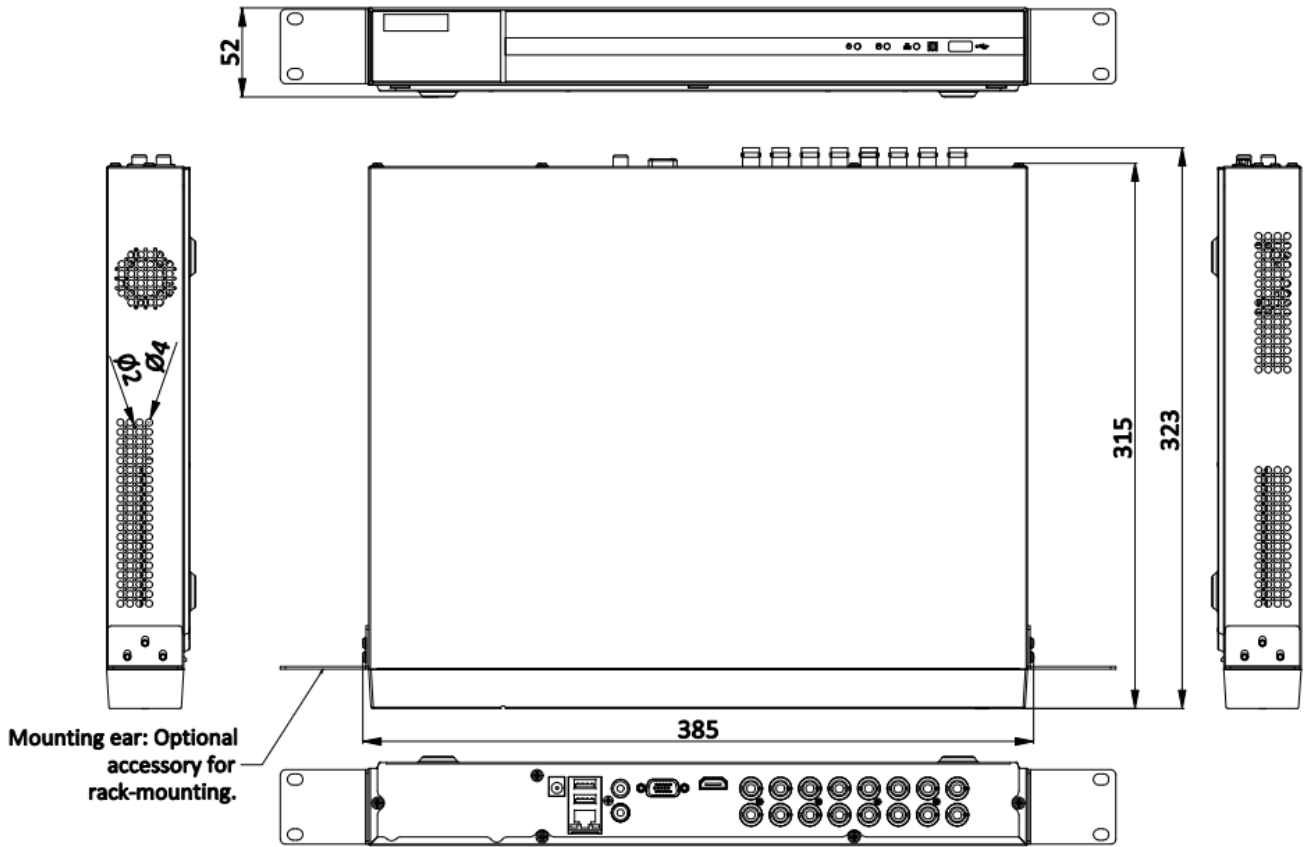
Model	DVR-216Q-M2
Motion Detection 2.0	
Human/Vehicle Analysis	Deep learning-based motion detection 2.0 is enabled by default for all analog channels, it can classify human and vehicle, and extremely reduce false alarms caused by objects like leaves and lights; Quick search by object or event type is supported;
Recording	
Video compression	H.265 Pro+/H.265 Pro/H.265/H.264+/H.264
Encoding resolution	When 1080p lite mode is not enabled: 4 MP lite/1080p/720p/VGA/WD1/4CIF/CIF When 1080p lite mode is enabled: 4 MP lite/3 MP/1080p lite/720p lite/VGA/WD1/4CIF/CIF
Frame rate	Main stream: When 1080p Lite mode is not enabled: 4 MP lite/1080p@15 fps; 720p/VGA/WD1/4CIF/CIF@25 fps (P)/30 fps (N) When 1080p Lite mode is enabled: 4 MP lite@15 fps; 1080p lite/720p lite/VGA/WD1/4CIF/CIF@25 fps (P)/30 fps (N) Sub-stream: WD1/4CIF@12 fps; CIF@25 fps (P)/30 fps (N)
Video bit rate	32 Kbps to 10 Mbps
Dual stream	Support
Stream type	Video, Video & Audio
Audio compression	G.711u
Audio bit rate	64 Kbps
Video and Audio	
IP video input²	2-ch (up to 18-ch) Enhanced IP mode on: 8-ch (up to 24-ch), each up to 4 Mbps Up to 6 MP resolution Support H.265+/H.265/H.264+/H.264 IP cameras
Analog video input	16-ch BNC interface (1.0 Vp-p, 75 Ω), supporting coaxitron connection
HDTV input	3K(2960 x 1665)@20 fps, 5 MP(2560 x 1944)@20 fps, 4 MP(2560 x 1440)@30 fps, 4 MP(2560 x 1440)@25 fps,1080p@30 fps, 1080p@25 fps,720p@30 fps, 720p@25 fps
AHD input	5 MP(2560 x 1944)@20 fps,4 MP(2560 x 1440)@30 fps, 4 MP(2560 x 1440)@25 fps, 1080p@30 fps, 1080p@25 fps, 720p@30 fps, 720p@25 fps
HDCVI input	5 MP(2592 x 1944)@20 fps,4 MP(2560 x 1440)@30 fps, 4 MP(2560 x 1440)@25 fps, 1080p@30 fps, 1080p@25 fps, 720p@30 fps, 720p@25 fps
CVBS input	PAL/NTSC
CVBS output	N/A
VGA output	1-ch, 1920 x 1080/60Hz, 1280 x 1024/60Hz, 1280 x 720/60Hz
HDMI output	1-ch, 1920 x 1080/60Hz, 1280 x 1024/60Hz, 1280 x 720/60Hz, 1024 x 768/60Hz
Video output mode	HDMI and VGA simultaneous output

Audio input	1-ch, RCA (2.0 Vp-p, 1 K Ω)
	16-ch via coaxial cable
Audio output	1-ch, RCA (Linear, 1 K Ω)
Two-way audio	1-ch, RCA (2.0 Vp-p, 1 K Ω) (using the first audio input)
Synchronous playback	16-ch
Network	
Total bandwidth	128 Mbps
Incoming bandwidth (Enhanced IP mode)	96 Mbps
Remote connection	128
Network protocol	TCP/IP, PPPoE, DHCP, HiLookVision, DNS, DDNS, NTP, SADP, NFS, iSCSI, UPnP™, HTTPS, ONVIF
Network interface	1, RJ45 10M/100M/1000M self-adaptive Ethernet interface
Auxiliary interface	
SATA	2 SATA interfaces
Capacity	Up to 10 TB capacity for each disk
Serial interface	N/A
USB interface	Rear panel: 2 × USB 2.0
Alarm in/out	N/A
General	
Power supply	12 VDC, 5 A
Consumption (without HDD)	≤ 25 W
Working temperature	-10 °C to +55 °C (+14 °F to +131 °F)
Working humidity	10% to 90%
Dimension (W × D × H)	385 × 315 × 52 mm (15.2 × 12.4 × 2.0 inch)
Weight (without HDD)	≤ 2 kg (4.4 lb.)

Note:

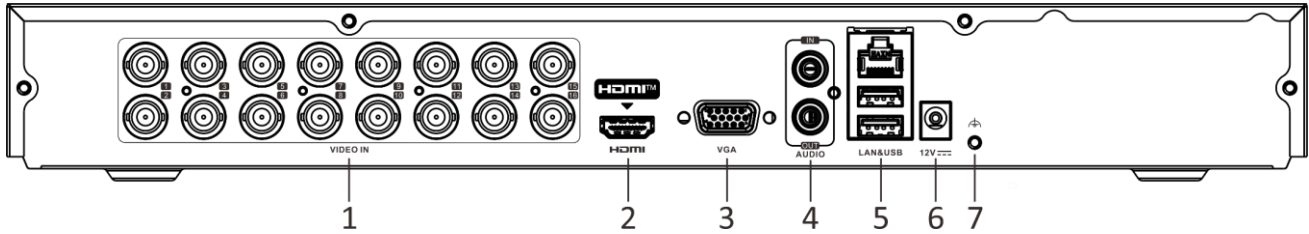
1: Enhanced IP mode might be conflicted with smart events (perimeter protection) or other functions, please refer to the user manual for details.

Dimension



scale/1:1;Unit/mm

Physical Interface



No.	Description	No.	Description
1	Video and Coaxial Audio In	5	USB Interface and LAN Network Interface
2	HDMI Interface	6	Power Input
3	VGA Interface	7	GND
4	AUDIO OUT and AUDIO IN, RCA Connector		

Available Model

DVR-216Q-M2